

**TASKalfa**  
552ci



TASKalfa 552ci | Color Multifunctional System

EVERY DOCUMENT. EVERY TASK. EVERY TIME.



# TASKalfa 552ci Color MFP:

The Kyocera TASKalfa 552ci Color Multifunctional System elevates office productivity to new heights with the combination of fast output speeds, Kyocera's proven color technology, and innovative product features assures the T components and embedded HyPAS, a powerful and scalable software solutions platform, the TASKalfa 552ci provides your business The TASKalfa 552ci delivers superior document output when it matters most!

## COLOR NEVER LOOKED SO GOOD

The TASKalfa 552ci brings the **WOW** factor to your business. Whether you want to persuade, present or just attract attention, adding color will raise the bar on your documents, while helping to drive your company's message.

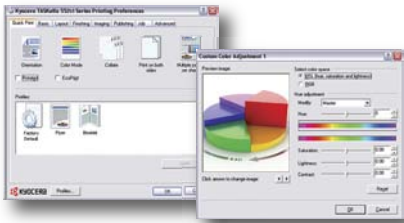
Powerful, intuitive and incredibly efficient, the **proven technology** engineered into every TASKalfa Color MFP delivers brilliant, high-impact color. In addition, an **intelligent color calibration system** puts you in control, while ensuring consistent color reproduction page after page. Colors are true, gradations are smooth, and shading is accurate.

The result? Vivid color and crisp black & white documents that reflect your professionalism.



## POWER AT THE DESKTOP

Kyocera's advanced KX Driver allows users to take full advantage of unique print features including the ability to save profiles for common jobs and advanced color settings to maximize your output quality.



### Fast Dual Scan Document Processor

At up to 100 images per minute in full color, the dual scan capability dramatically improves your productivity and handles mixed originals with ease, for a powerful scanning solution in both full color and black & white.

### Robust 3,000 Sheet Finisher

This robust finisher supports multi-position stapling and a variety of paper weights. Options include 2/3 hole punch, 7 bin mailbox and booklet folding for all your advanced finishing needs.

### Maximum Productivity

A standard 2 GB of RAM and 160 GB x 2 Hard Disk Drives maximize your document processing and ensure that all of your document output requirements are handled with ease.

### Efficient Duplex and Paper Handling

Standard stackless duplex combined with a maximum 4,100 sheet paper capacity (statement to ledger) gives you the flexibility to satisfy all your print and copy needs.

### Professional Booklet Folding

Fold and saddle stitch booklets, up to 16 individual sheets from letter to ledger, for that professional touch in-house.



## FLEXIBILITY TO GROW WITH



### Reversing Automatic Document Processor

- 100 Sheet Reversing Automatic Document Processor with Scan Speeds up to 75 ipm

### Optional 1,000 Sheet Finisher

- Multi-Position Staple
- Document Sorting
- 16 lb Bond – 90 lb Index

# Power, Performance, Flexibility

Unsurpassed performance, superior image quality and ultra-reliability that your business demands. A powerful TASKalfa 552ci will deliver superior document output, day-in and day-out. Engineered with Kyocera's unique long life with maximum performance and seamless integration with software applications that will operate in virtually any environment.



## Wide 8.5" Color Touch Screen Control Panel

The user-friendly color touch screen control panel provides robust document handling and ease of use at your fingertips.

## "On-board Document Storage"

Create a simple way for you to store, secure and access critical documents at the device through TASKalfa's unique on-board Document Box.

## Advanced USB Host Interface

Conveniently print-from, and scan-to, any USB drive right from the touch screen control panel in PDF, JPEG, TIFF and XPS file formats.

## Integrated Solutions

Leverage the full potential of your MFP with tools and utilities designed to maximize your security, management and accounting capabilities.

## Optional Fax

Add up to two optional Super G3 fax/network fax systems and optional Internet fax for a space-saving footprint. Standard multi-send features combine fax and scanning for a truly efficient communication device.

## HIGH END PERFORMANCE & DESIGN

- **Fast, Superior Color Imaging for a Solid Impression.** At speeds up to 55 ppm black and 50 ppm color, combined with proven color technology, the TASKalfa 552ci brings brilliant color to your output and enhanced quality control from the first print to the last.
- **Micro-Particle Toner.** Kyocera's unique, micro-particle toner provides superior image quality in both color and black & white. 25,000 pages Black, 18,000 pages CMY @ 5% coverage.
- **Proven Technology & Ultra Reliability.** Kyocera's award-winning technology incorporates long life imaging components that can dramatically lower your total cost, while providing high productivity and exceptional image quality.
- **Keeping the Future Green.** Kyocera products offer environmentally friendly and superior energy- and supply-saving features without compromising your productivity.
- **HyPAS.** Kyocera's Hybrid Platform for Advanced Solutions, or HyPAS, will allow your business to further optimize the TASKalfa 552ci with powerful integrated solutions designed to boost your business activities. HyPAS delivers a broad range of options that enable the TASKalfa 552ci to seamlessly integrate with widely accepted software applications and operate in virtually any environment.

## YOUR BUSINESS DEMANDS



### Dual 500 Sheet Paper Trays

- Statement to Ledger Sized Sheets
- 16 lb Bond – 90 lb Index



### 7 Bin Mailbox for 3,000 Sheet Finisher

- Output Sorting – Up to 7 Individual Mailboxes
- 16 lb Bond – 90 lb Index



### Optional Fax / Network Fax

- Add Up to Two G3 Fax Systems
- Internet Fax Kit Available

## HyPAS™





Shown with Optional DSDP, 500 x 2 Tray, and 3,000 Sheet Finisher  
50.9" W x 26.8" D x 48.8" H



Shown with Optional DSDP, 500 x 2 Tray, and 1,000 Sheet Finisher  
48.8" W x 26.8" D x 48.8" H



Shown with Optional DSDP and 3,000 Sheet LCT  
23.8" W x 26.8" D x 48.8" H



Color Touch Screen Control Panel  
Screen Dimensions: 8.5" measured diagonally

Hybrid Platform for Advanced Solutions

## Basic Specifications

Configuration	Color Multifunctional System - Print/Scan/Copy/Optional Fax
Pages Per Minute	Letter: 55 ppm Black / 50 ppm Color; Legal and Ledger: 28 ppm Black / 25 ppm Color
Warm-up Time	58 Seconds or Less
First Copy Out Time	Black: 4.6 Seconds; Color: 6.1 Seconds
First Print Out Time	Black: 5.2 Seconds; Color: 6.7 Seconds
Resolution / Bit Depth	600 x 600 dpi / 8 Bit Color Depth
Memory / Hard Disk Drive	2 GB RAM / 160 GB x 2 HDDs
Duplex	Standard Stackless, Statement to Ledger, 16 lb Bond - 90 lb Index; 5.5" x 8.5" - 11" x 17"
Electrical Requirements / Weight	120V, 60Hz, 12 Amps / 233 lbs (mainframe only)
Max Monthly Duty Cycle	225,000 Pages Per Month

## Paper Supply

Standard Paper Sources	Dual 500 Sheet Trays, 100 Sheet MPT; Auto Selection / Switching, Add Paper While Running
Optional Paper Sources	Dual 500 Sheet Paper Trays <b>PF-720(B)</b> ; 3,000 Sheet Large Capacity Tray <b>PF-760(B)</b>
Paper Capacity	Standard: 1,100 Sheets; Maximum: 4,100 Sheets
Paper Size	5.5" x 8.5" - 11" x 17" (Statement to Ledger)
Paper Weight	Trays: 16 lb Bond - 90 lb Index; MPT: 16 lb Bond - 120 lb Index; <b>PF-760(B)</b> : 16 - 28 lb Bond
Input Materials	Bond Paper, Recycled Paper, Transparencies, Cardstock, Envelopes

## Print Specifications

Controller	IBM PowerPC 750 GL / 800 MHz
PDLs/Emulations	PRESCRIBE, PCL6 (5c, XL), KPDL3 (PS3), XPS (Direct Print)
Fonts	136 KPDL3, 93 PCL6, 8 Windows Vista, 1 Bitmap
Windows OS Compatibility	Windows 2000 / XP / 2003 / Vista / 2008 / Windows 7
Novell OS Compatibility	Novell NetWare® 3.x/4.x/5.x/6.x
MAC OS Compatibility	Mac OS 10.x
UNIX OS Compatibility	Sun OS 4.1.x; Solaris 2.x; AIX; HP-UX (LPR)
Interfaces	Standard: 10/100BaseTX, Hi-Speed USB 2.0, USB Host Interface, 2 Expansion Slots
Network Print and Supported Protocols	TCP/IP, IPX/SPX, AppleTalk, NetBEUI, IPv6, IPsec, SSL, WSD Print
Drivers	KX Driver, Mini Driver, KX Driver for XPS, XPS Mini Driver, Network Fax Driver, PPD for MAC
Utilities	PRESCRIBE, PDF Direct Print, KMnet Admin, KMnet for Accounting, KMnet Viewer, Kyocera Command Center

## Scan Specifications

Scan Resolutions	200, 300, 400, 600 dpi
File Formats	Black & White: PDF, TIFF; Color: PDF, JPEG, TIFF, XPS
PDF Extension	High Compression PDF, Encrypted PDF
Connectivity / Supported Protocols	10/100BaseTX / TCP/IP
Scanning Functions	Scan to Folder (SMB), Scan to e-Mail, Scan to FTP, Scan to USB, WSD Scan, TWAIN Scan
Driver	TWAIN / WIA Driver

## Color and Black & White Scanner

## Copy Specifications

Image Mode	Text, Photo, Text/Photo, Auto, Manual, Map
Continuous Copy	1 - 999 / Auto Reset to 1
Additional Features	Positive/Negative Reverse, Mirror Image, Rotate Copy, Border Erase, Split Copy, Electronic Sort, Margin Shift, XY Zoom, Job Build, Sheet Insertion
Job Management	Job Interrupt, Job Build, 50 Job Programs, Repeat Copy, 1,000 Department Codes
Color Adjustment	One Touch, Color Balance, Hue, Auto Exposure, Sharpness, Color Calibration, ACS
Magnification / Zoom	Full Size, 5 Reduction, 5 Enlargement Preset Ratios, 25 - 400% in 1 step increments
Document Box	Custom Box, Job Box, Removable Memory Box, Fax Box (with optional Fax System)

## Fax Specifications

Compatibility	G3 Fax
Data Compression	MMR, MR, MH, JBIG
Transmission Speed / Modem Speed	Approximately 3 seconds per page / 33.6 Kbps
Fax Memory	Standard: 12 MB; Maximum: 120 MB
Driver	KM Network Fax Driver
Fax Functions	Duplex TX/RX, Confidential RX/TX, F-Code RX/TX, Broadcasting, Fax Box, Dual Fax

## Fax System (S)C / Internet Fax Kit (A) (requires Fax System (S)C)

## Optional Document Processors

Type / Capacity	<b>DP-760(B)</b> Dual Scan Document Processor / 100 Sheets <b>DP-750(B)</b> Reversing Automatic Document Processor / 100 Sheets
DSDP Scan Speed <b>DP-760(B)</b>	Simplex: 75 ipm/Duplex: 100 ipm (300 dpi)
RADF Scan Speed <b>DP-750(B)</b>	Simplex: 75 ipm/Duplex: 45 ipm (300 dpi)
Acceptable Originals / Weights	5.5" x 8.5" - 11" x 17", Mixed Size Originals / 9 - 42 lb Bond

## DP-760(B) or DP-750(B)

## Optional 3,000 Sheet Finisher

Stack / Staple Capacity	Main Tray: 3,000 Sheets; Sub Tray(B): 200 Sheets; Sub Tray(C): 50 Sheets / 50 Sheets: 8.5" x 11"; 30 Sheets: 8.5" x 14", 11" x 17"
Paper Size	Main Tray: 8.5" x 11" - 11" x 17"; Sub Tray(B): 5.5" x 8.5" - 11" x 17"; Sub Tray(C): 8.5" x 11"
Paper Weight	Main Tray: 16 lb Bond - 90 lb Index Duplex; 16 lb Bond - 120 lb Index Simplex; Sub Tray (B/C): 16 - 24 lb Bond
Edge Staple Position	3 Positions: Top Left, Bottom Left, Center Bind
Optional Multi-Bin Mailbox	<b>MT-720(B)</b> Includes 7 Trays; Supports 16 lb Bond - 90 lb Index Stack Capacity per Bin: 100 Sheets: 5.5" x 8.5", 8.5" x 11"; 50 Sheets: 8.5" x 14", 11" x 17"
Optional Punch	<b>PH-5A 2</b> and 3 Hole Punch Unit, Supports 8.5" x 11" - 11" x 17", 16 lb Bond - 110 lb Index
Optional Saddle Stitch / Fold	<b>BF-720</b> Supports 8.5" x 11", 8.5" x 14", 11" x 17", 16 lb Bond - 120 lb Index; Over 20 lb Bond Single Sheet Folding Capacity: 1-3 Sheets - 30 Booklets; 4-6 Sheets - 20 Booklets; 7-16 Sheets - 10 Booklets

## DF-760(B) (Requires JS-720(B), AK-720)

## Optional 1,000 Sheet Finisher

Stack / Staple Capacity	1,000 Sheets; 50 Sheets: 8.5" x 11"; 30 Sheets: 8.5" x 14", 11" x 17"
Paper Size / Weight	8.5" x 11" - 11" x 17" / 16 - 28 lb Bond
Edge Staple Position	3 Position: Top Left, Bottom Left, 2 Point Long Edge

## DF-780(B) (Requires JS-720(B))

## Additional Options

KYOcapture, KYOcapture Express, Equitrac, Fax Memory, Platen Cover Type (E), Job Separator **JS-720(B)**, Attachment Kit **AK-720**, Stand; Data Security Kit (E) Provides Security Overwrite and Encryption for Print, Copy, and Scan; Printed Document Guard Kit (A), Original Hard Copy Holder **DT-710**

Specifications and design are subject to change without notice.  
For the latest on connectivity visit [www.kyoceramita.com](http://www.kyoceramita.com).  
All trademarks are the property of their respective owners.

Kyocera Mita America, Inc. Headquarters: 225 Sand Road, Fairfield, NJ 07004-0008, USA  
© 2010 Kyocera Mita America, Inc.

IC# 855D400256

