

KIP 7170 SPECIFICATIONS



Single Footprint - KIP 7170 Multifunction System

System Configurations

2 Roll Print/Copy/STF with Color STF	B&W Wide Format Printer with Integrated Scan System
Stacking Systems (standard)	Integrated top stacking - up to 50 sheet capacity
Stacking Systems (optional)	Rear Print Tray, Print & Original Stacking System, KIP 1200 Stacker
Folding Systems (optional)	KIP Fold 1000, KIP Fold 2000

General

Print Technology	Electrophotography (LED) with organic photoconductor (OPC) and closed toner system
Speed	6 D / 3.3 A0 size pages per minute, First Print Output Time 21 seconds D / A1 size page
Warm Up Time	Instant from standby, <4.5 minutes from start up
Configurations	Multifunction system (print/copy/scan) 2 Rolls
Electrical Requirements	120V +6% or -10%, 50/60Hz, 15 Amps / 220-240V, 50/60 Hz, 7 A
Power Consumption	Sleep - <14 W Printing - 1.5 kW
Dimensions	63" (w) x 28" (d) x 59" (h) / 1590 mm (w) x 700 mm (d) x 1510 mm (h)
Weight	511 lbs / 244 kg

Printer

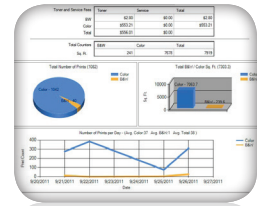
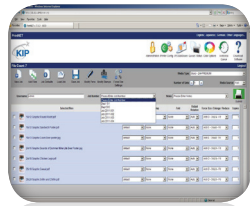
Print Resolution	600 x 2400 dpi
Paper Capacity	3000 sq. ft. / 297 sq. m. roll media
Output Sizes Width	11 - 36 inch / 297 - 914 mm
Output Sizes Length	Length: 20' / 6 m standard, 500' / 152 m optional
Paper Weight	Bond-Plain 18-24 lb / 64-90 gsm, Vellum-Translucent-Tracing 18-20 lb / 80 gsm, Film 3.5-4mil / 75 micron
Media Type	Bond-Plain, Vellum-Translucent-Tracing, Film (compatible with recycled & colored bond)

Controller

Controller Type	KS8 Controller with Windows 7 embedded
Memory	2 GB DDR3 Standard - Upgradable to 4 GB
Compatible File Formats	PDF, DWF, HPGL 1/2, HP-RTL, Calcomp 906/907, CALS Group 4, TIFF Group 4, PCX, CIT/TG4, VCGL, Uncompressed, Grayscale TIFF, TIFF Packbits, IOCA, EDMICS, TLC, PNG, JPEG

KIP 7170 Scanner

Scanner Type	Fully Integrated - C.I.S. with KIP RTT Technology
Scan Resolution	600 x 600 dpi optical resolution
Scan Speed	Up to 38.5 ft per minute / 195 mm per second (B&W) Up to 13 ft per minute / 66 mm per second (Color)
Scan Format	TIFF, Multipage TIFF, PDF, PDF-A, Multipage PDF, DWF, Multipage DWF, JPEG, CALS
Scan Destination	Local USB (Removable Media), Unlimited System Mailboxes (Local), Unlimited FTP, Unlimited SMB, Unlimited Cloud Connect to OneDrive, Google Drive or Dropbox, Box.com, Microsoft Sharepoint & Microsoft Office 365 Online™
Original Size Width	11" - 36" / 297 mm - 914 mm
Original Thickness	Up to 1.6mm thick



KIP Print Management Software		
KIP Touchscreen	Integrated Cloud Connections	Full integration with OneDrive, Google Drive or Dropbox, Box.com, Microsoft Sharepoint & Microsoft Office 365 Online™
	Concurrent Print & Scan to File	Scan images to file while printing, select number of copies, select output media
	File to Print	Fully cloud connected. Scan mailboxes, print from removable media, print from network locations, view images prior to printing, apply folding preferences, save/recall print jobs
	Copying & Scanning	Fully cloud connected. Collated sets copying, recall, edit & reprint previous jobs, set copy & concurrent print, apply digital stamps, scan directly to multi-page PDF, DWF or TIF, Apply folding preferences to copies, scan to USB removable media drives
	System Management	Print queue control, keycode management, inkjet configuration, illustrated operator guides, system guides, service mode access, system preset access
KIP Printing Applications	KIP Print	KIP Print network printing software is an easy to use application designed to provide operators with a fast and accurate means of producing high quality print sets. An intuitive ribbon style interface with an emphasis on job building; featuring column browsing, color thumbnail previews and total preflight control.
	KIP Cloud Printing	The ability to produce wide format prints using nothing more than an email with attachments and a few key words helps keep mobile clients on the go to stay productive.
	KIP PrintNet Web Printing	Web-based printing utility which facilitates management of the print queue, configuration of files for printing from Windows, UNIX and Mac based internet browser applications
	KIP Windows/AutoCAD Drivers	Windows driver supports 32 or 64 bit printing, set collation, job accounting, media selection & folding features. AutoCAD driver enables printing directly from AutoCAD applications with advanced vector/raster print data control.
	KIP Touchscreen Printing	KIP Touchscreen eliminates the need for additional PC hardware by printing documents from removable media such as standard USB drives & network drives.
KIP Cost Review Application	Cost Review Application and KIP Track System	KIP Cost Review Application reports can be delivered via email or printed on demand to provide information related to toner coverage, media use and recent job details. When activated, the KIP Track system requires operators to log in before operating.
KIP Color Plus	Color Scanning	Scan directly to PDF, JPG and TIFF, automatic quality presets, scan directly to USB and removable media, scan DPI from 200-600, scan to FTP, hard drive, user mailbox, email, scan preview, auto size detection, auto image color, original and copy presets, unlimited scan presets, lead and trail edge adjustments.
	Color Copying (optional)	Copy directly to wide range of inkjet printers, multiple copy count, reduction enlargement, rotate, mirror, invert, zoom, area of interest, scale to fit, auto image color, original and copy presets, unlimited copy presets, lead and trail edge adjustments, closed loop calibration, copy preview.
	Color Printing (optional)	Print single or multiple (sets) images directly to wide range of inkjet printers, multiple print count, reduction enlargement, rotate, mirror, zoom, invert, multi-touch preview, area of interest, scale to fit, ICC profile support, auto image color, lead and trail edge adjustments, print preview.
Software Options		
PDF Printing Keycode	Includes support for Postscript levels 1, 2 & 3, PDF 1.7	
Accessory Kits	Secure Hard Drive Kit	



For the latest on connectivity visit www.kyoceradocumentsolutions.com.
 KYOCERA Document Solutions America, Inc. Headquarters: 225 Sand Road, Fairfield, NJ 07004-0008, USA
 Specifications and design are subject to change without notice.
 ©2014 KYOCERA Document Solutions America, Inc.

U.S.A. Phone: (800) 252-6793
 Email: info@KIPamerica.com
 Website: www.kip.com

KIP is a registered trademark of the KIP Group. All other product names mentioned herein are trademarks of their respective companies. All product features and specifications are subject to change without notice. Complete product specifications are available upon request.